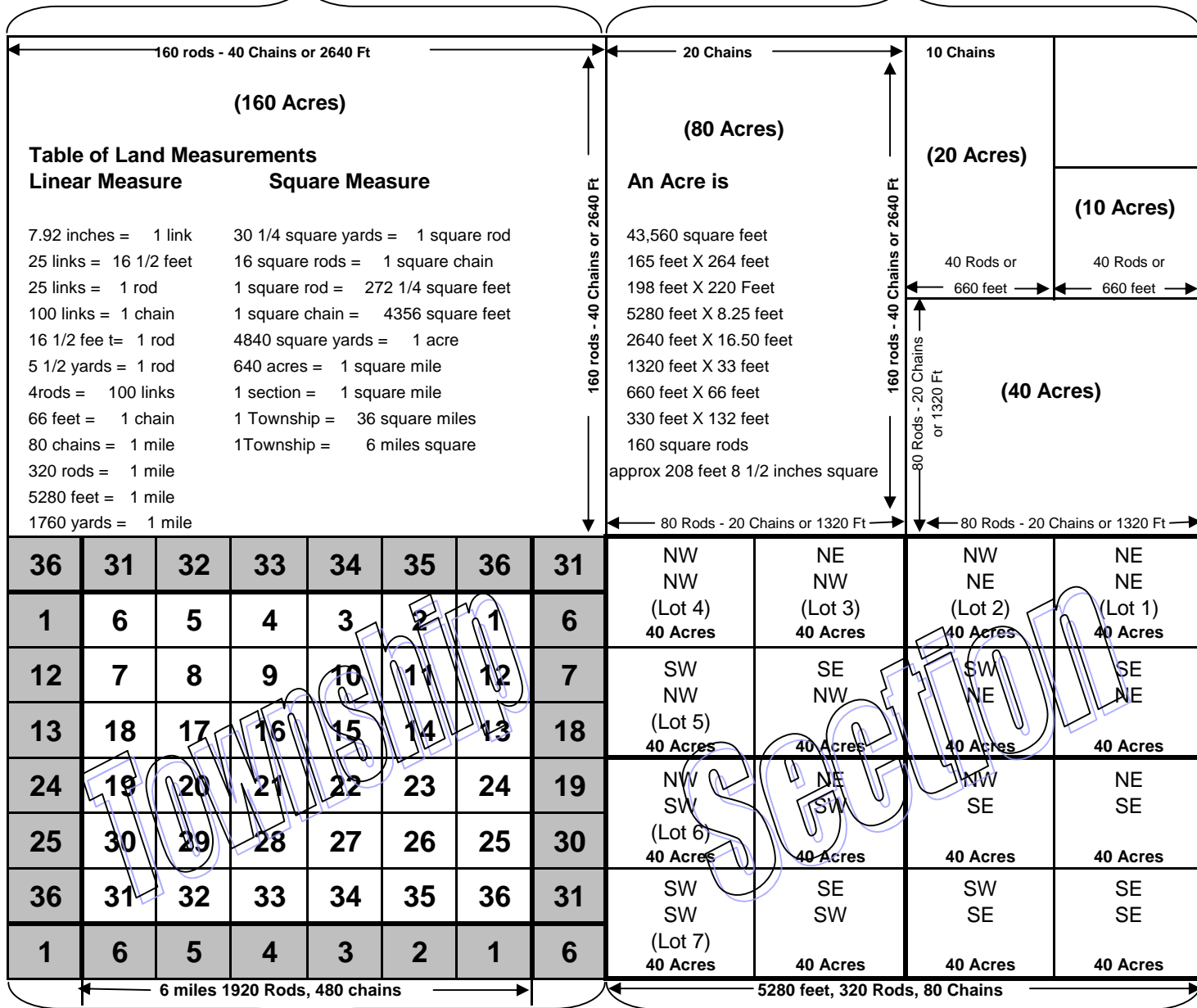


## A Section of Land - 640 Acres

**80 Chains - 320 Rods - 5280 Feet**

Quarter Section

Subdivisions of a quarter section



Sectional Map of Townships with Adjoining Sections

A township is 36 square miles (theoretically)

Standard Lots are usually in the north and west sections of a township and the acreage may be more or less than 40

Subdivisions of a Section

A section is 1 mile square (theoretically)

In Washington and Oregon, Ranges are measured from the Willamette Meridian 45°31'11"N 122°44'34"W which was established in 1851.

Additional information about the subdivision of a section of land can be found at: <http://www.missaukee.org/docs/section.htm>