

**ICEHI/PACE-EH**  
**Environmental Health Assessment Team (EHAT)**  
**MINUTES**

**Date:** Thursday, September 6, 2007

**Time:** 5:30pm – 7:30pm

**Location:** NWFRC

**Present:** Celine Servatius (Vice Chair), Dave Macys, Jim Patton, Carl Stephens, Katie Hicks, Marie Piper

**Staff Present:** Tim McDonald, Keith Higman, Carrie McLachlan, Whitney Webber

**Absent:** Leslie Stevens (Chair), Elaine Woods, RoseAnn Alspektor, Phyllis Brett, Lisa Clark, Chris Markle, Patty Folkestad, Kevin Rio Kiper

**Call to Order:** Celine Servatius called the Environmental Health Assessment Team (EHAT) meeting to order at 5:45pm.

**Agenda Items:**

1. **Reviewed minutes from June 2007 meeting** – Minutes approved as submitted.
2. **Tim addresses EHAT on the future of the PACE program** – Tim discussed staff's recommendation. Included below. EHAT members present approved the recommendation. Input is needed from absent members.

### Future of EHAT without funding

Our recommendation is that EHAT merge with CHAB (Island County Community Health Advisory Board).

- EHAT members keep a focus on EH issues as CHAB members, strong preference to address EH issues as priority issues
- Initiate a CHAB Environmental Health Assessment Committee that would continue to work on current issues, assess and identify new EH issues
- Current issue: Illegal dumping (social marketing campaign, code changes, new partnerships with other community partners), do have ICHD staff working in solid waste
- Current issue: Walkability (trail guides, Walking School Bus, outreach, new partnerships). This issue would dovetail well with a Chronic Disease prevention program.

#### Island County Health Department Realities:

We have limited staff who can provide limited support to committees/Task Forces as well as continue to maintain logistical functions—agendas, meeting arrangements, work/activities

We will not be able to continue current level of staffing given funding cuts

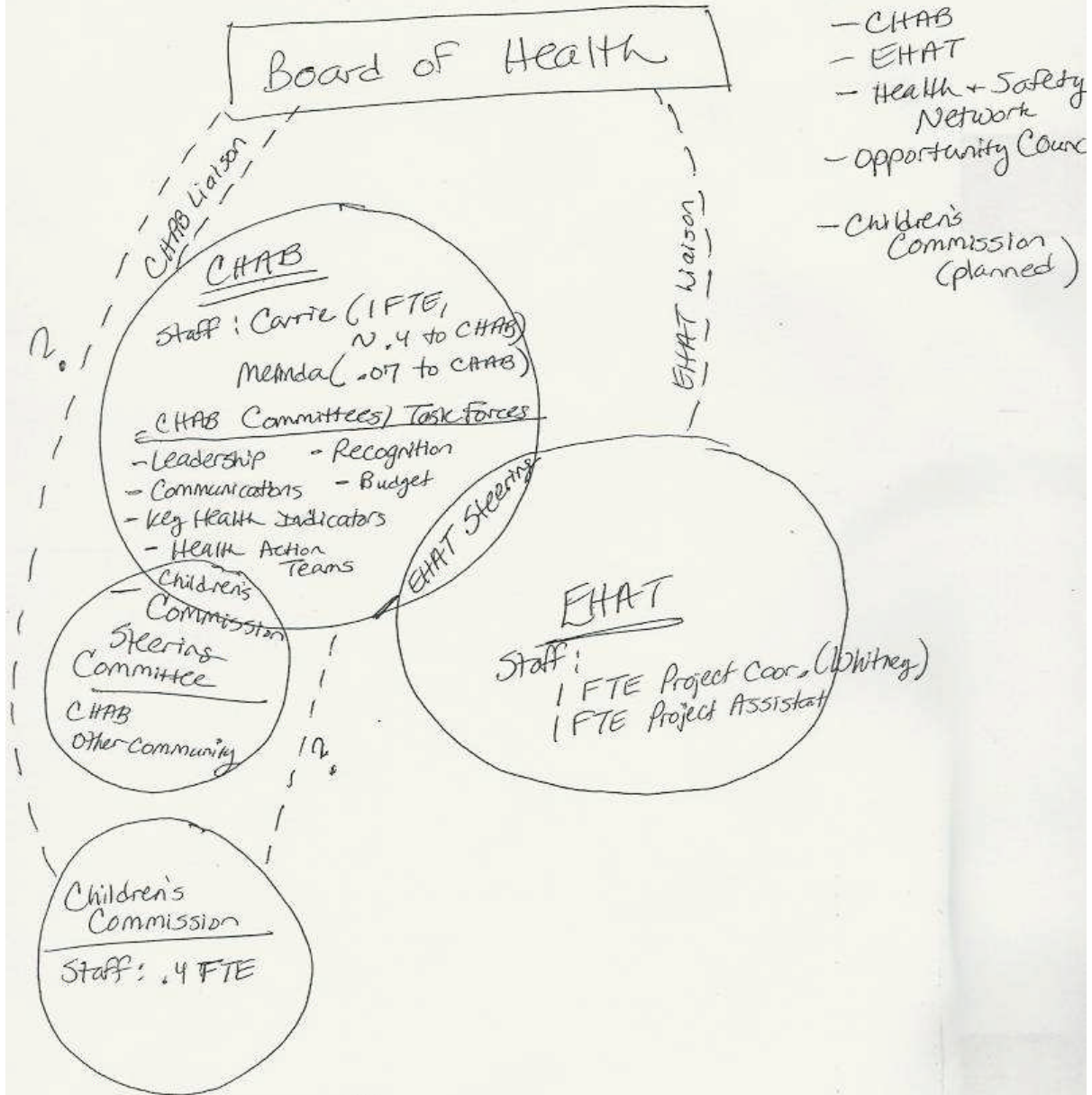
We can continue to seek funding to staff needed programs, health projects

#### CHAB Logistics

Meets the first Tuesday of the month at WGH from 5:30-7:30—would be difficult to change days due to meeting room conflicts, would like to keep this as are one of the only outside groups allowed to access WGH meeting rooms on a regular basis, meeting logistics are easy.

CHAB meetings could change. We could meet the first hour as a whole group (report progress/action/findings) and then split into committees/Task Forces for the second hour or other options.

Regular Reports 10<sup>3</sup>  
BoH from



- CHAB
- EHAT
- Health + Safety Network
- Opportunity Council
- Children's Commission (planned)

- Will have issue specific Task Forces/Committees
- Led by a Children's Commissioner
- Draw from other Community members

3. **Planning for the second walkability forum** – EHAT reviewed a draft agenda and proposed two dates for the walkability forum—Tuesday, October 30, and Thursday, November 1. The date, forum location, and revised agenda will be sent to the group in late September.
4. **Updates** – Dave Macys spoke to the group about his talk at Au Sable. For more details, please contact Dave.
5. **Upcoming events** – Volunteers needed!
  - a) Children's Day, Saturday, September 29, from 10 AM to 2 PM at South Whidbey Community Park – EH Staff will be volunteering their time.
  - b) Walking School Bus Kick-Off at Oak Harbor Elementary – Katie Hicks volunteered to be present for the kick-off. The group suggested that the kick-off be moved from the proposed date of October 3 to October 10 so as not to conflict with bus ridership week.
  - c) Whidbey Island Farm Tour Reception, Friday, October 5, from 4 to 7 PM at Greenbank Farm – Leslie Stevens put together poster displays for the event and would like other EHAT members to volunteer with her.
6. **Closing business** – N/A

**Meeting was adjourned at 7:30 p.m.**