

Technical Appendix F

Clearing & Grading Trends

Technical Appendix F Clearing and Grading Trends

Summary Table for all Clearing and Grading Permits issued between 1999 and the middle of 2006

	1999	2000	2001	2002	2003	2004	2005	2006*	Total
Permits	37	36	36	66	70	72	81	37	435
Total Parcel Acreage	361.35	390.78	349.35	588.97	686.17	855.67	1083.01	249.28	4565
Total Acreage of Clearing	200.92	242.44	154.08	268.94	182.37	162.72	315.09	57.23	1584
Average Parcel Size	9.77	10.86	9.70	8.92	9.80	11.88	13.37	6.74	81.04
Average Clearing Size	5.43	6.73	4.28	4.07	2.61	2.26	3.89	1.55	30.82
Average Percent Cleared	56%	62%	44%	46%	27%	19%	29%	23%	38%

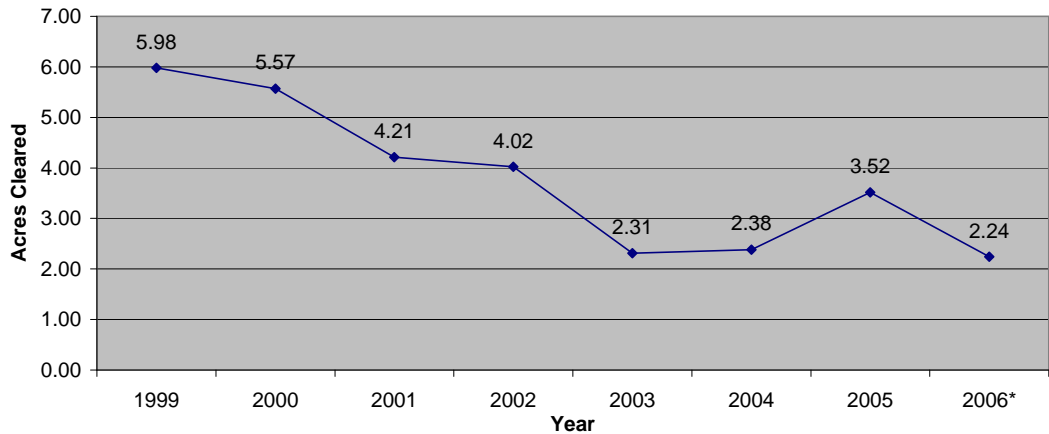
Summary Table that Describes the Number of Permits Issued Each Year by Parcel Size

Parcel Size	1999	2000	2001	2002	2003	2004	2005	2006*	Total
<1 acre	2	1	0	1	6	8	7	11	36
1 to 2.49 acres	3	2	3	12	7	10	5	5	47
2.5 to 4.99 acres	13	6	4	9	14	12	18	8	84
5 to 9.99 acres	10	17	21	22	19	26	23	6	144
10 to 19.99 acres	4	2	4	13	15	6	14	5	63
>=20 acres	5	8	4	9	9	10	14	2	61
Totals	37	36	36	66	70	72	81	37	

Summary Table that Describes the Average Acreage Cleared per Parcel

Parcel Size	1999	2000	2001	2002	2003	2004	2005	2006*	Avg.
<1 acre	0.25	0.30	0.00	0.50	0.22	0.30	0.27	0.16	0.25
1 to 2.49 acres	1.10	0.62	1.10	0.86	0.45	0.33	0.52	1.14	0.77
2.5 to 4.99 acres	1.98	1.44	1.30	2.06	1.87	1.30	1.02	1.47	1.56
5 to 9.99 acres	2.96	3.60	3.13	2.19	2.66	1.98	2.47	2.71	2.71
10 to 19.99 acres	6.21	8.10	5.06	6.18	3.87	3.45	4.72	1.95	4.94
>=20 acres	23.38	19.35	14.68	12.34	4.80	6.92	12.11	6.03	12.45
Average	5.98	5.57	4.21	4.02	2.31	2.38	3.52	2.24	3.78

Average Acreage Cleared Per Year Per Parcel



Summary Table that Describes the Average Percent Cleared per Parcel

Parcel Size	1999	2000	2001	2002	2003	2004	2005	2006*	Avg.
<1 acre	37%	43%	0%	100%	42%	52%	43%	34%	44%
1 to 2.49 acres	63%	30%	78%	54%	27%	18%	32%	58%	45%
2.5 to 4.99 acres	58%	40%	43%	51%	53%	38%	34%	41%	45%
5 to 9.99 acres	45%	56%	50%	40%	45%	31%	40%	43%	44%
10 to 19.99 acres	55%	80%	50%	55%	33%	28%	43%	17%	45%
>=20 acres	58%	66%	37%	42%	13%	13%	24%	11%	33%
Average	53%	53%	43%	57%	36%	30%	36%	34%	43%

Average % Cleared Per Year Per Parcel

