

September 11, 2007 Planning Commission Recommendation:

To recommend to the Board of Island County Commissioners for approval of the necessary Comp Plan changes and Zoning Amendment ZAA 012/0; Amendment to change parcel R32924-045-3370 from the Rural zoning classification to Rural Center zoning classification.

Exhibit A

Current Zoning Map

DO NOT USE AS A LEGAL DOCUMENT
ACCURACY NOT GUARANTEED

24-29-3E

S.E. 1/4

(136-6)

291-480
291-515

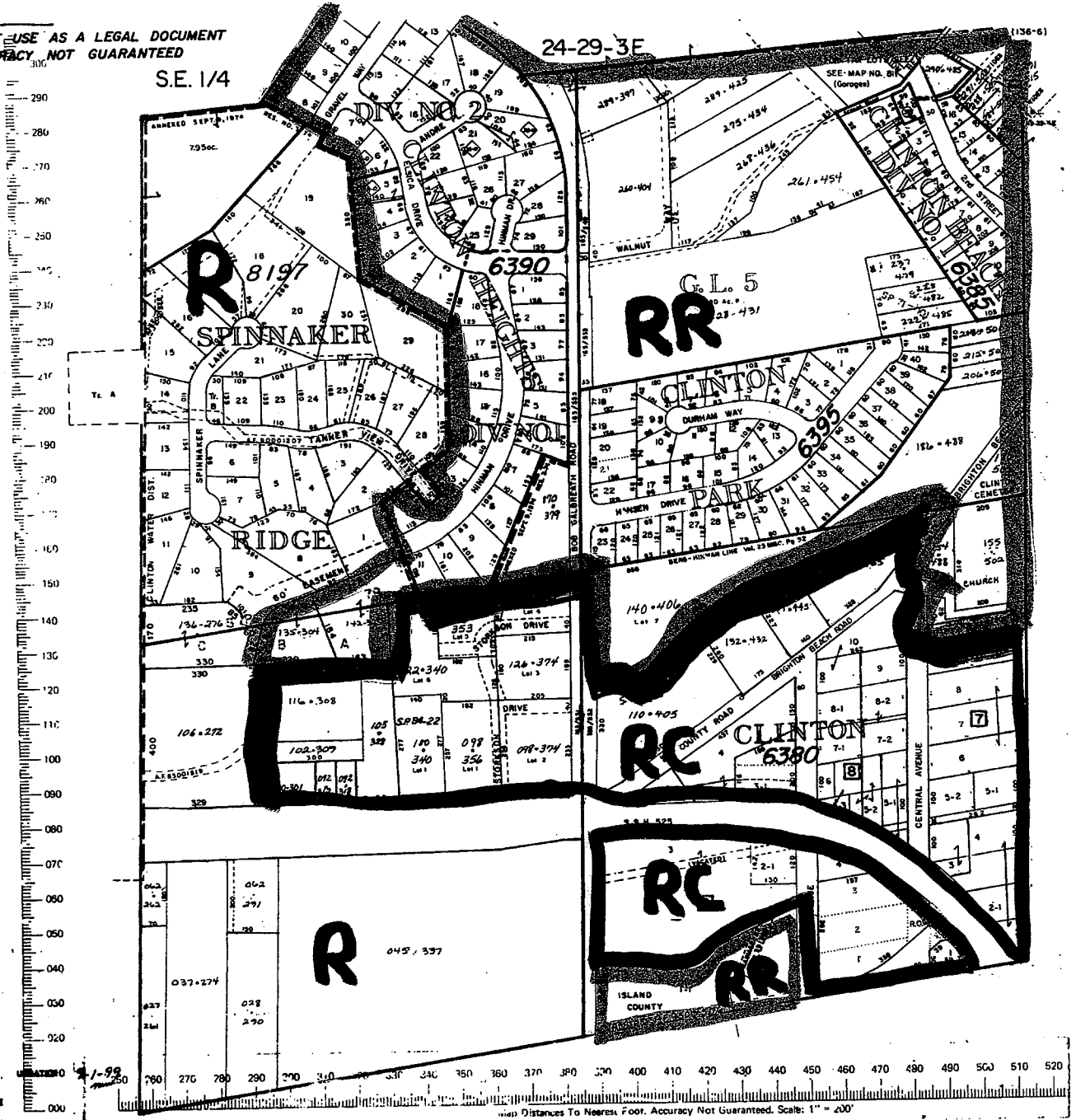


Exhibit B

Proposed Zoning Map

DO NOT USE AS A LEGAL DOCUMENT
ACCURACY NOT GUARANTEED

S.E. 1/4

24-29-3E.

(136-6)

